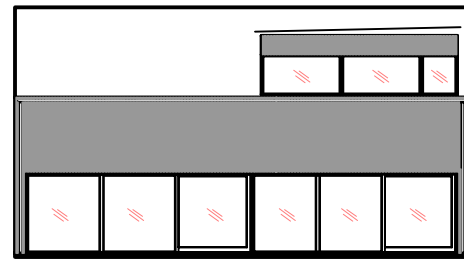
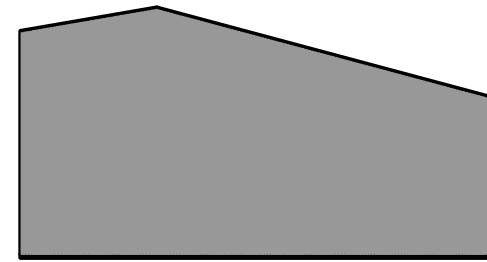


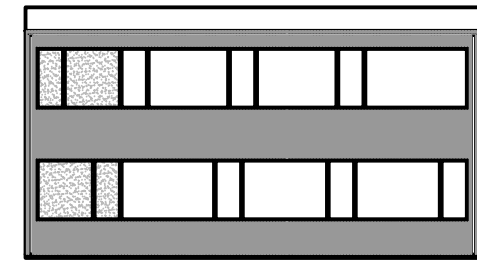
fasad A



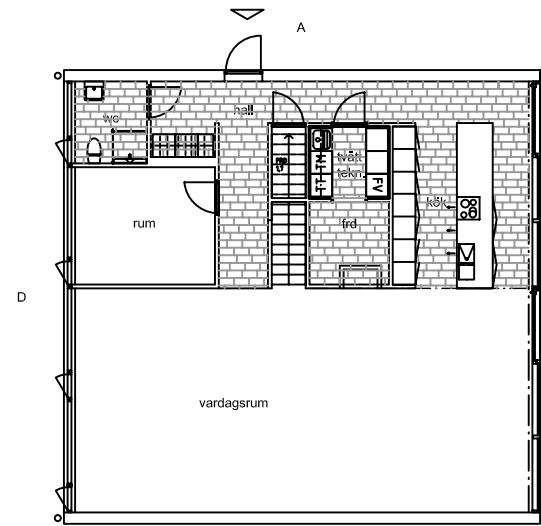
fasad B



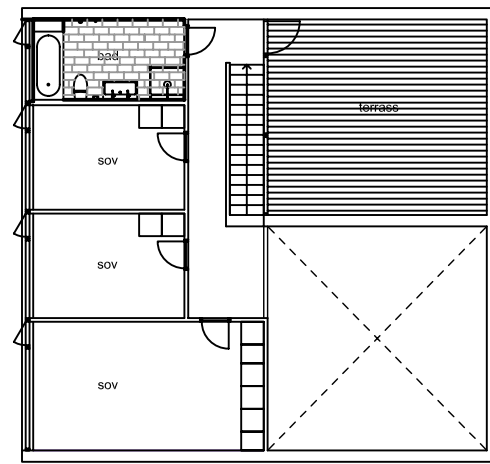
fasad C



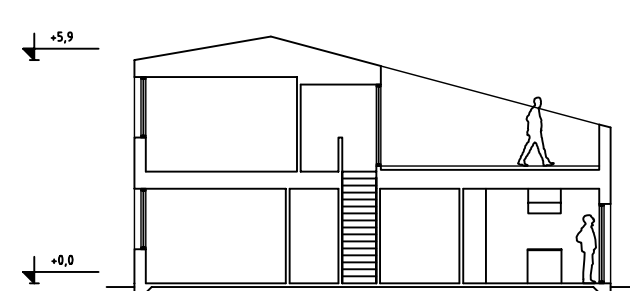
fasad D



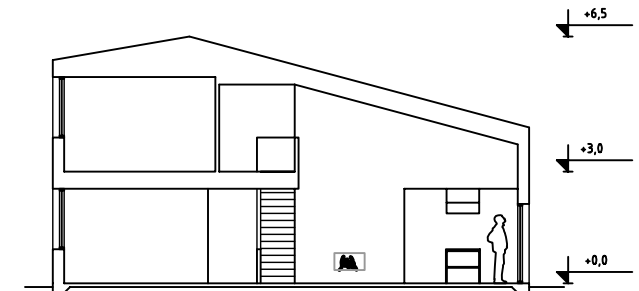
bottenplan



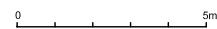
övreplan



principsektion A



principsektion B



ARKITEKTHUS

Tham & videgård Hansson

HUS: AH#043

TYP: 2 pl

BYA: 151 kvm

BOA: 207 kvm

SKALA: 1:200 A3

DATUM: 2009

Med reservation för eventuella ändringar