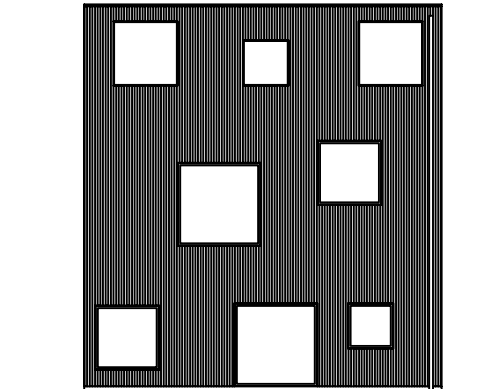
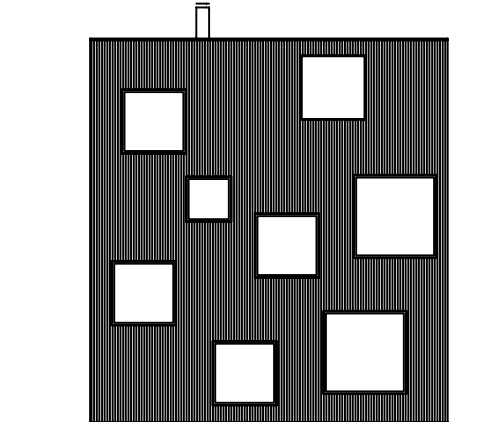


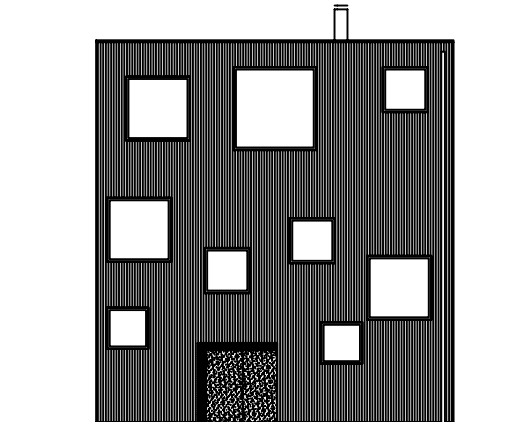
fasad A



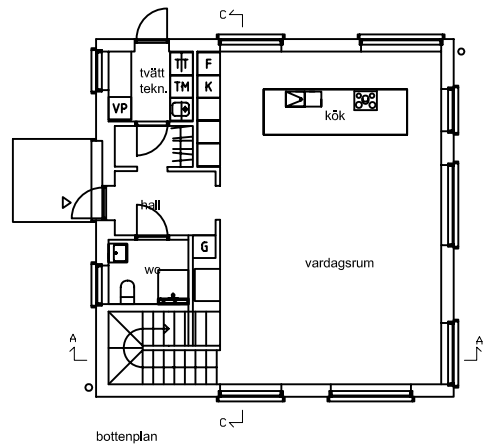
fasad B



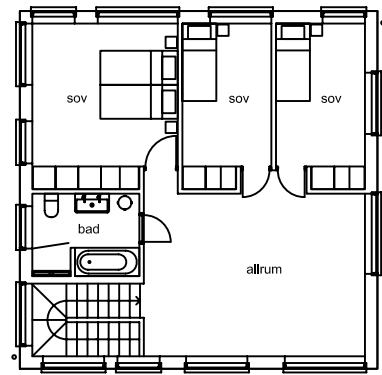
fasad C



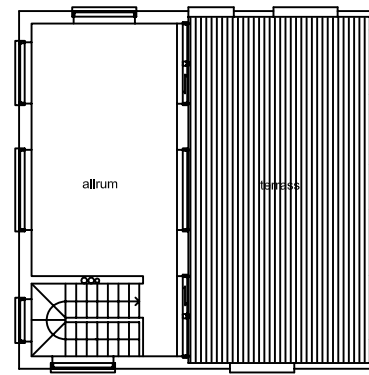
fasad D



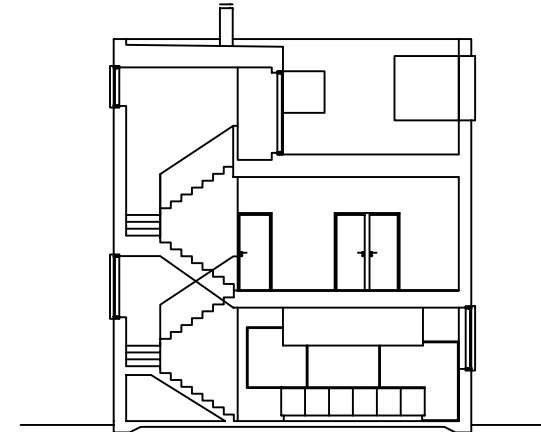
bottenplan



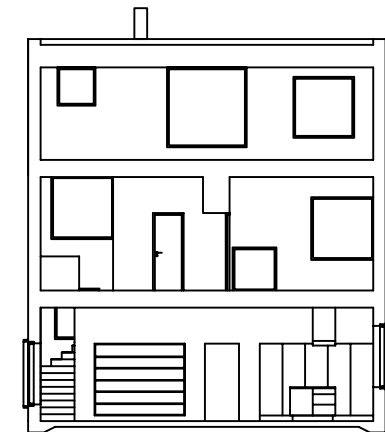
överplan



terrassplan



sektion A-A



sektion C-C



ARKITEKTHUS

Tham & videgård Hansson

HUS: AH#042
 TYP: 3 pl
 BYA: 90 kvm
 BOA: 189 kvm

SKALA: 1:200 A3
 DATUM: 2009

Med reservation för eventuella ändringar