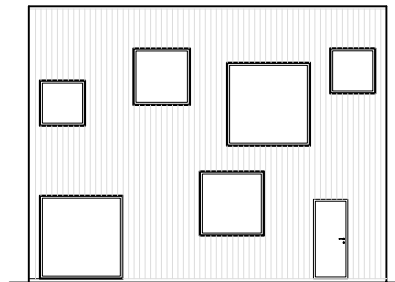
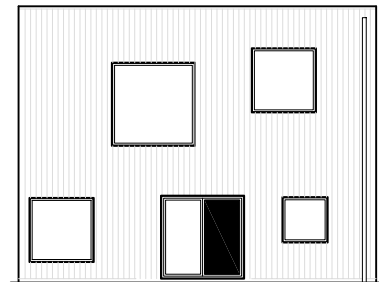


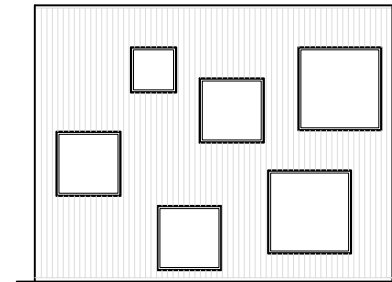
fasad A



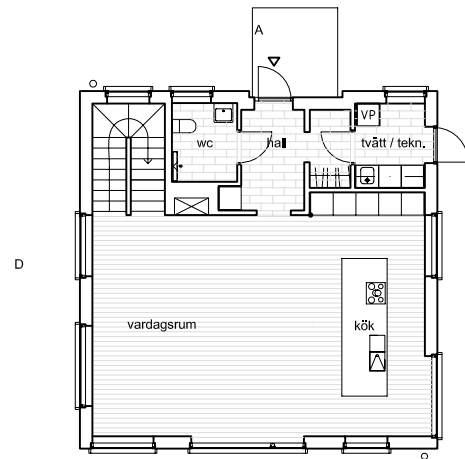
fasad B



fasad C

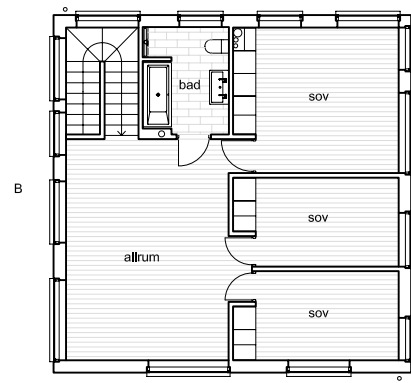


fasad D



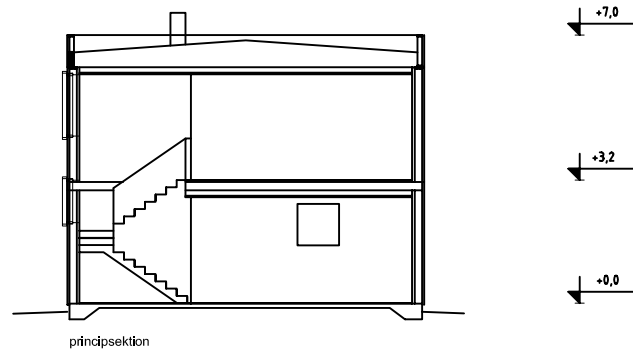
bottenplan

C



överplan

B



principsektion



ENTRÉPLAN  
 101 ENTRÉ  
 102 HALL  
 103 TVÄTT/TEKNIK  
 104 ALLRUM/KÖK  
 105 WC/DUSCH  
 ÖVRE PLAN  
 206 ÖVRE ALLRUM  
 207 WC/BAD  
 208 SOV  
 209 SOV  
 210 SOV  
 BYA 88 kvm  
 BOA 154 kvm

# ARKITEKTHUS

Tham & videgård Hansson

HUS: AH#042

TYP: 2pl

BYA: 90 kvm

BOA: 154 kvm

SKALA: 1:200 A3

DATUM: 2009

Med reservation för eventuella ändringar