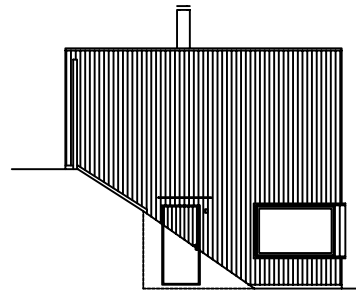
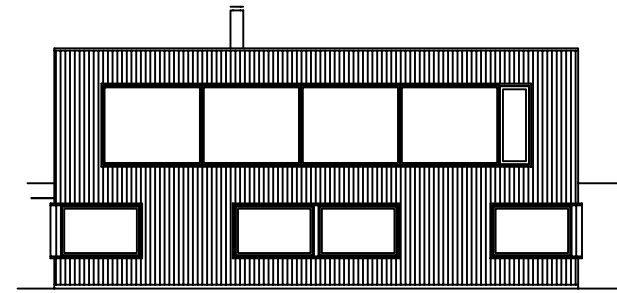


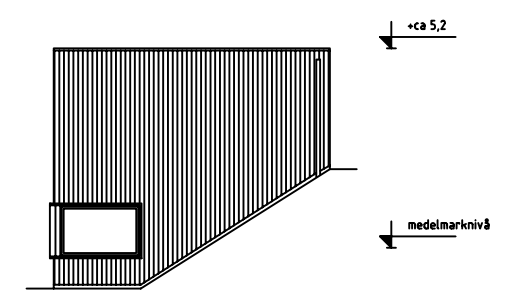
fasad A



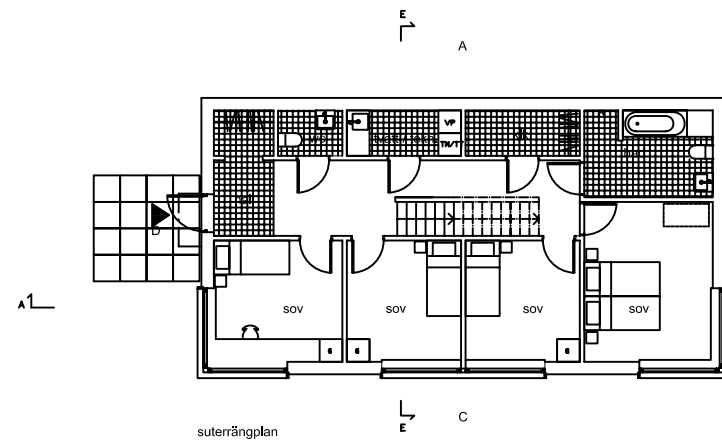
fasad B



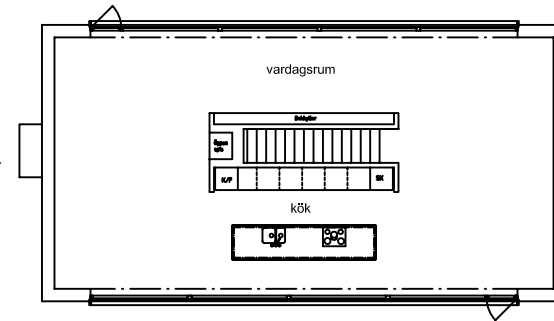
fasad C



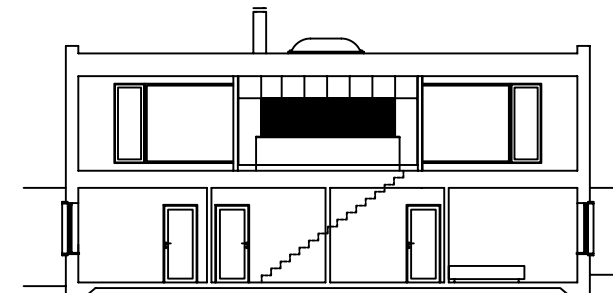
fasad D



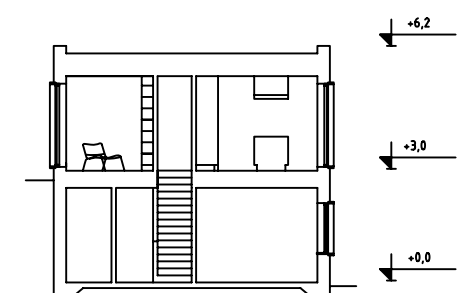
suterrängplan



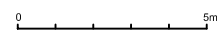
övreplan



sektion A-A



sektion B-B



# ARKITEKTHUS

Tham & videgård Hansson

HUS: AH#041  
 TYP: suterräng  
 BYA: 101 kvm  
 BOA: 176B kvm

SKALA: 1:200 A3  
 DATUM: 2009  
 Med reservation för eventuella ändringar