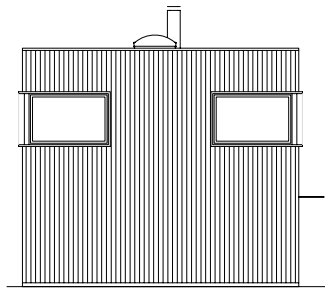
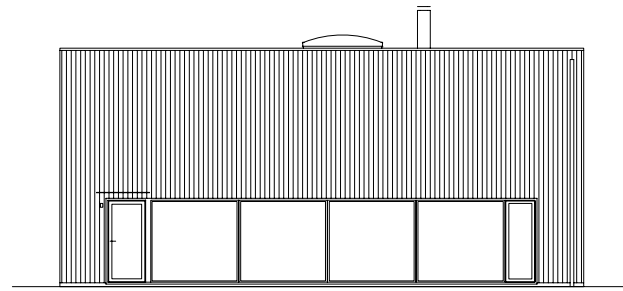


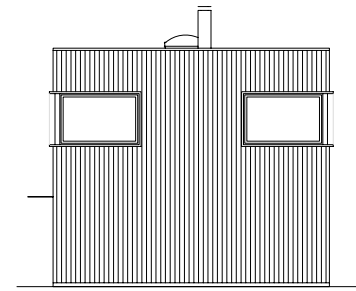
fasad A



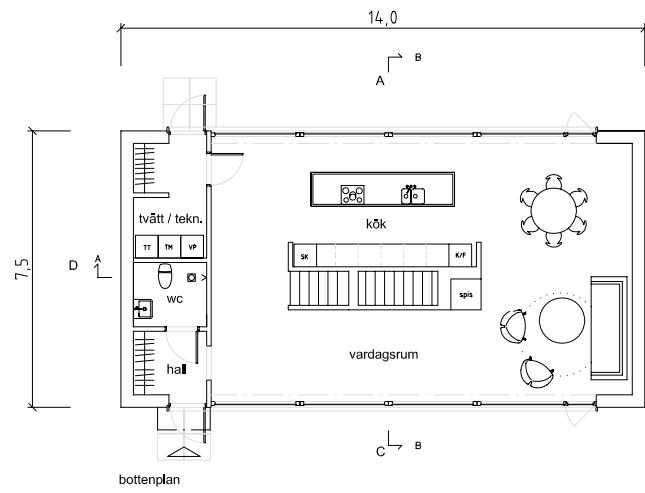
fasad B



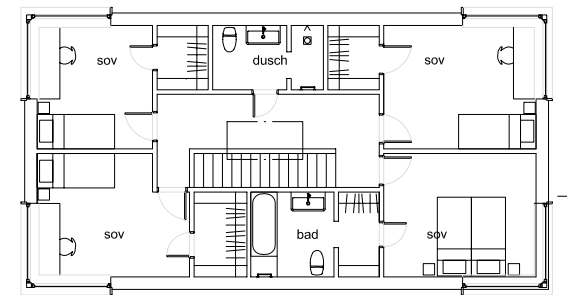
fasad C



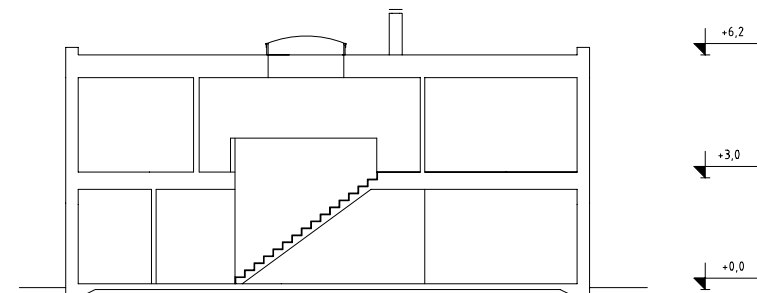
fasad D



bottenplan



övreplan



sektion A-A



ARKITEKTHUS

Tham & videgård Hansson

HUS: AH#041
 TYP: 2pl
 BYA: 105 kvm
 BOA: 176B kvm

SKALA: 1:200 A3
 DATUM: 2009

Med reservation för eventuella ändringar