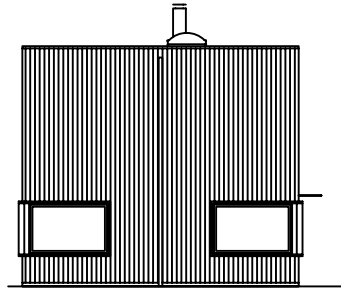
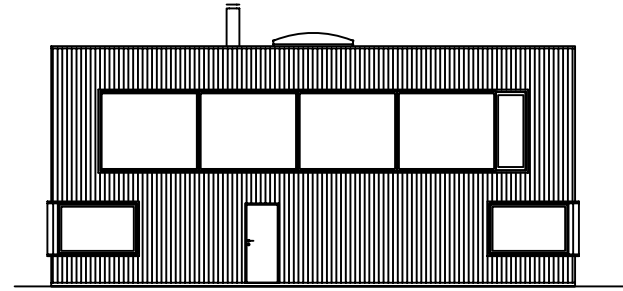


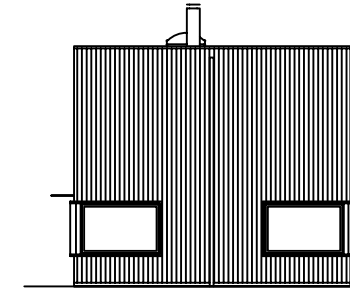
fasad A



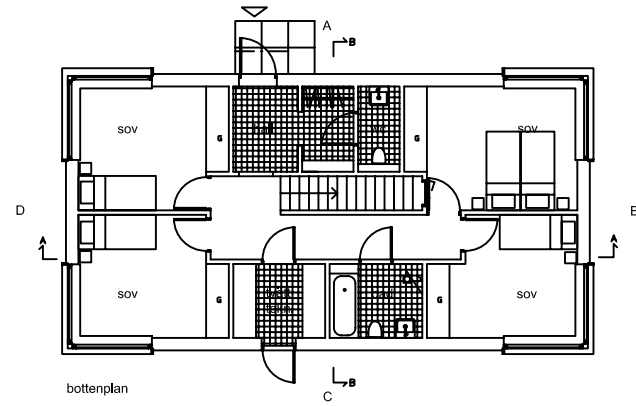
fasad B



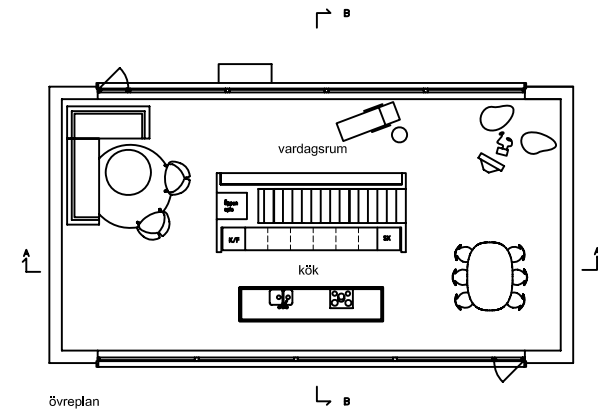
fasad C



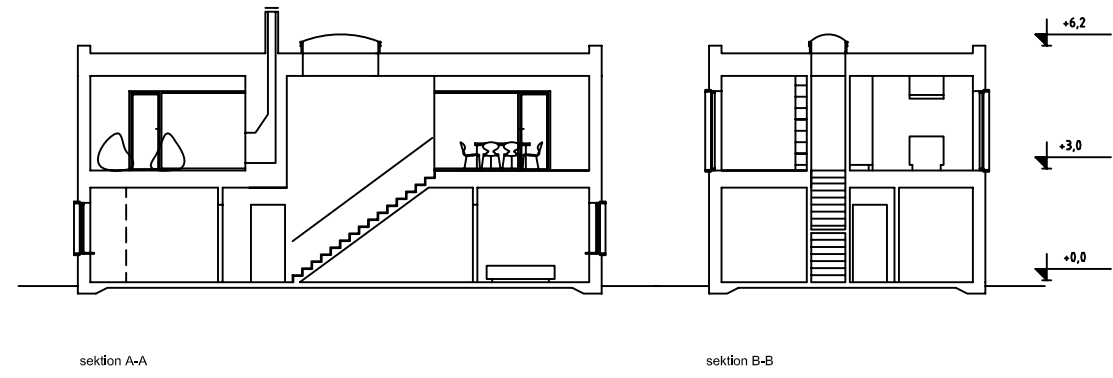
fasad D



bottenplan

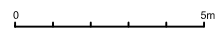


övreplan



sektion A-A

sektion B-B



ARKITEKTHUS

Tham & Videgård Hansson

HUS: AH#041
 TYP: 2pl
 BYA: 101 kvm
 BOA: 176A kvm

SKALA: 1:200 A3
 DATUM: 2009

Med reservation för eventuella ändringar