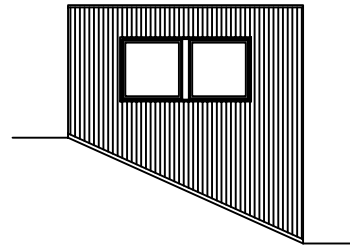
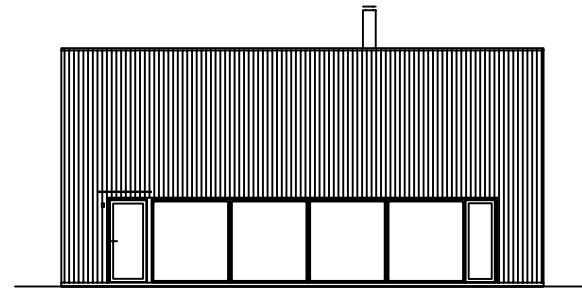


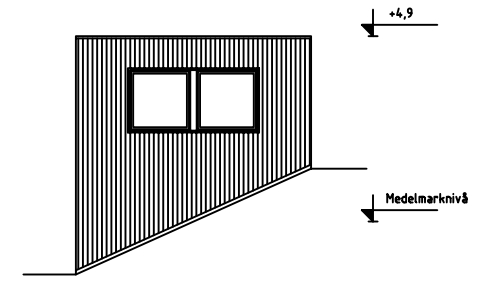
fasad A



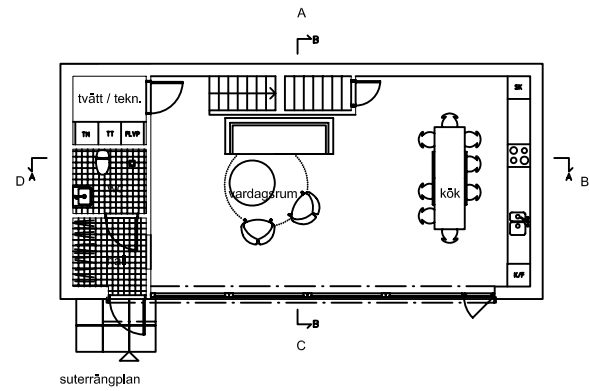
fasad B



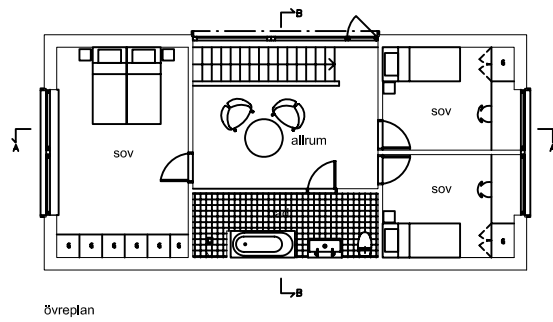
fasad C



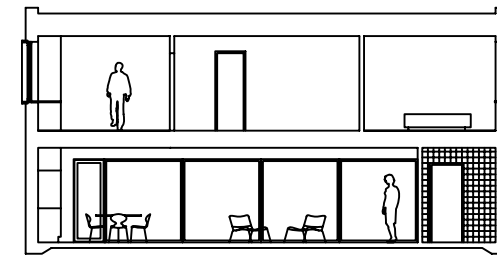
fasad D



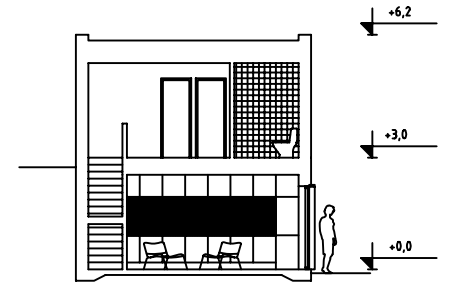
suterrängplan



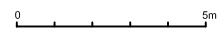
övreplan



sektion A-A



sektion B-B



ARKITEKTHUS

Tham & videgård Hansson

HUS: AH#041
 TYP: suterräng
 BYA: 80 kvm
 BOA: 133B kvm

SKALA: 1:200 A3
 DATUM: 2009

Med reservation för eventuella ändringar