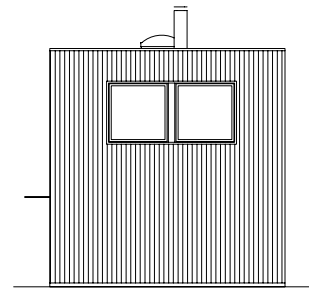
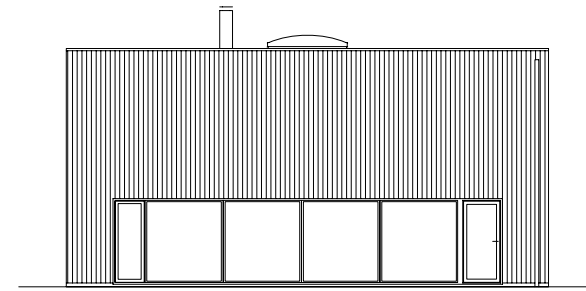


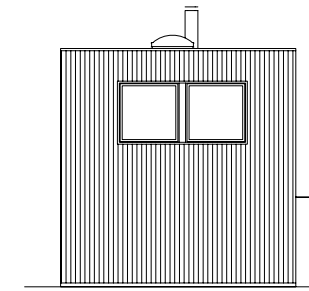
fasad A



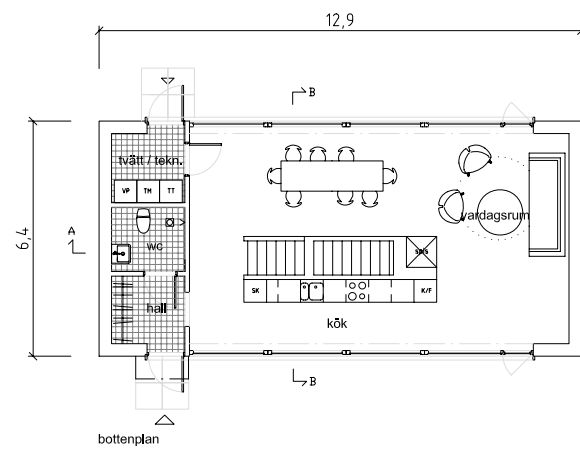
fasad B



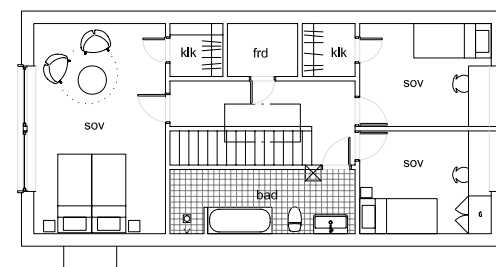
fasad C



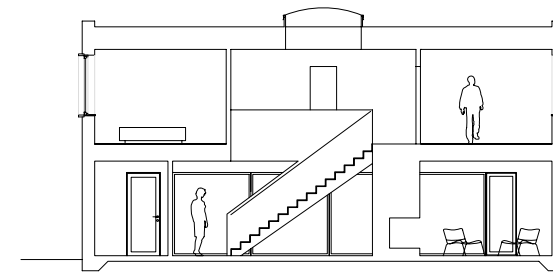
fasad D



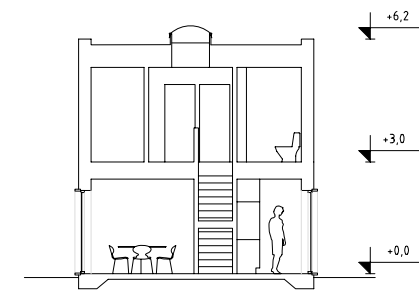
bottenplan



övreplan



sektion A-A



sektion B-B



# ARKITEKTHUS

Tham & videgård Hansson

HUS: AH#041  
 TYP: 2pl  
 BYA: 82 kvm  
 BOA: 133B kvm

SKALA: 1:200 A3  
 DATUM: 2009

Med reservation för eventuella ändringar