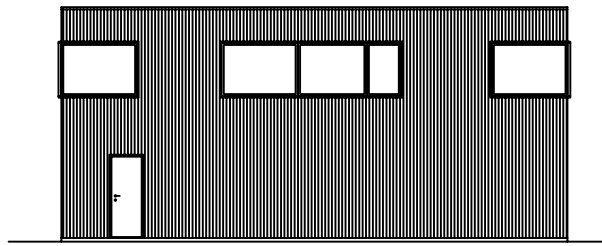
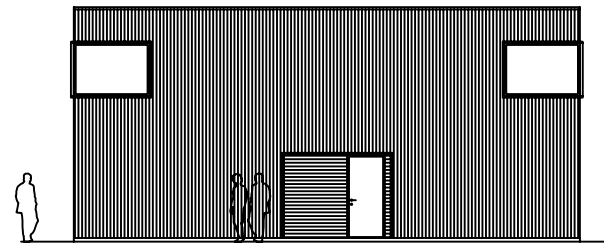


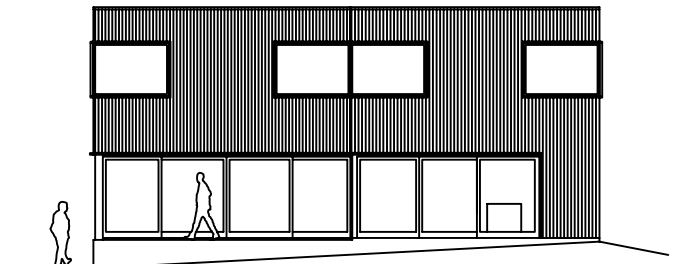
fasad A



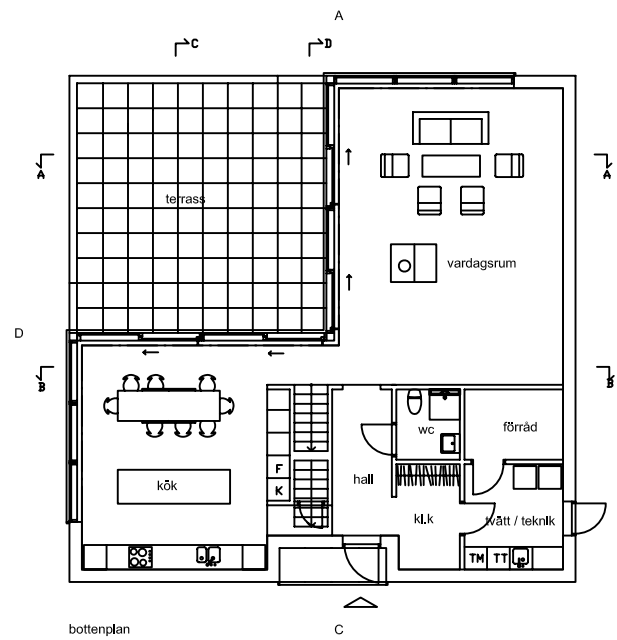
fasad B



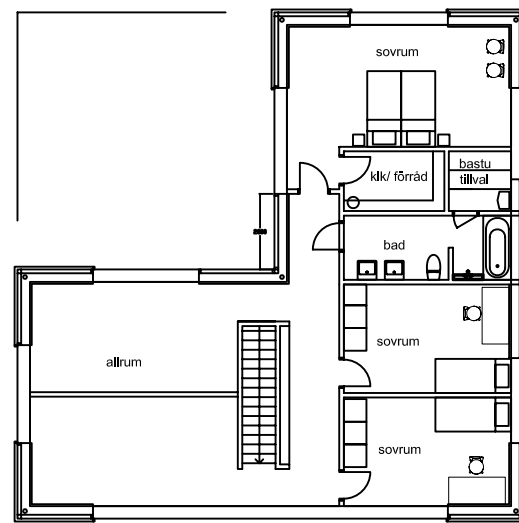
fasad C



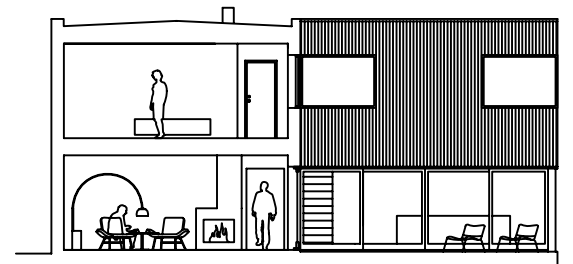
fasad D



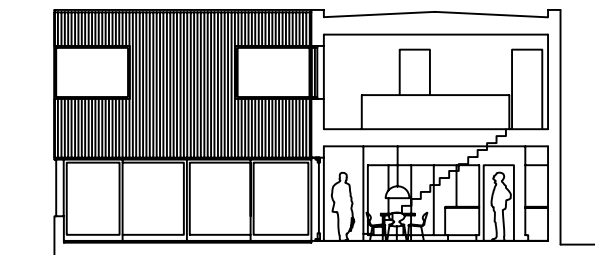
bottenplan



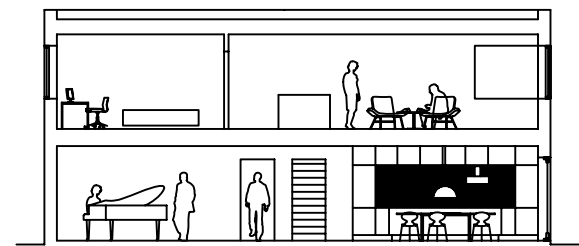
överplan



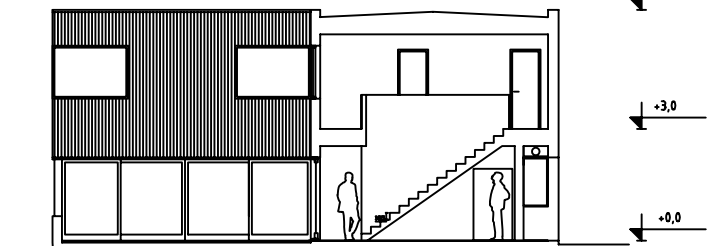
sektion A-A



sektion C-C



sektion B-B



sektion D-D

L_c L_D

0 5m

ARKITEKTHUS

Tham & videgård Hansson

HUS: AH#040

TYP: 2pl

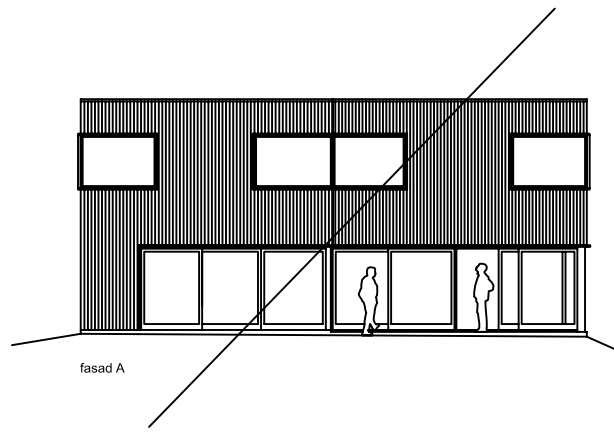
BYA: 131 kvm

BOA: 228A kvm

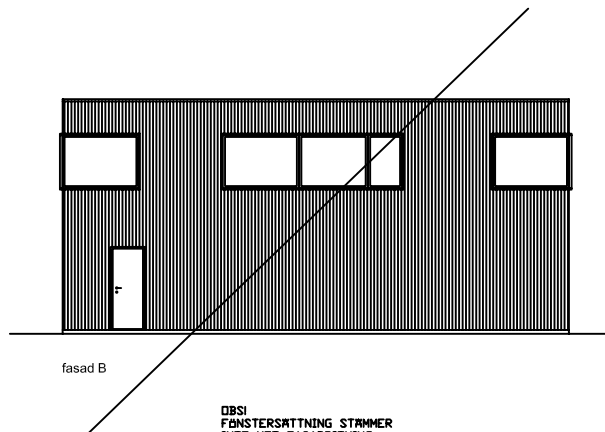
SKALA: 1:200 A3

DATUM: 2009

Med reservation för eventuella ändringar

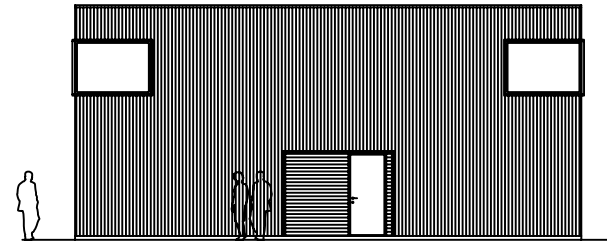


fasad A

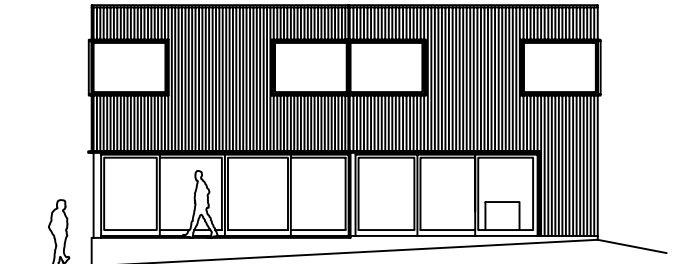


fasad B

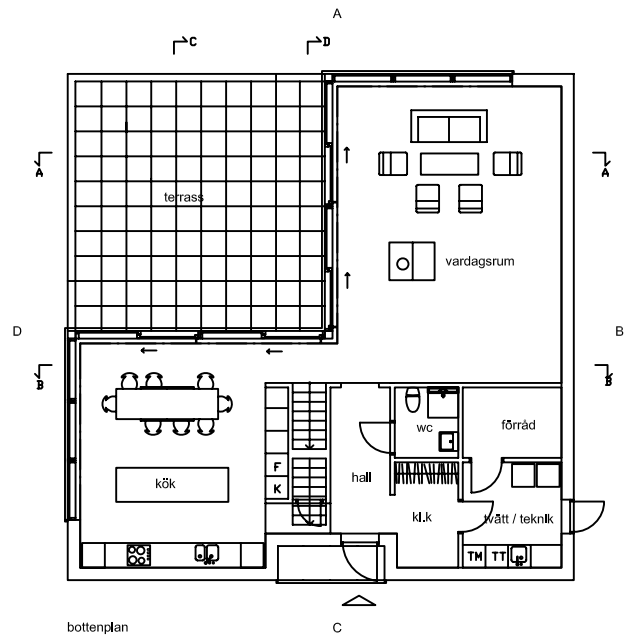
OBS!
FÖNSTERSÄTTNING STRÄMMER
INTE MOT FASADRIKTNING



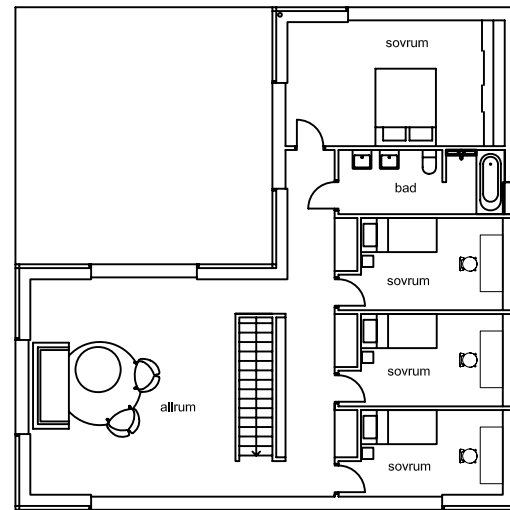
fasad C



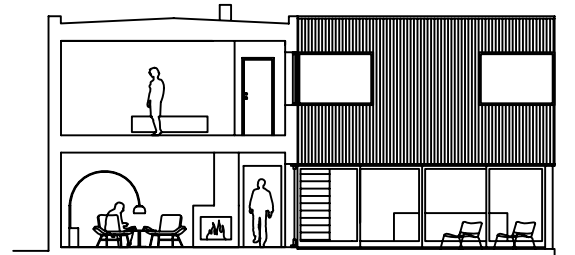
fasad D



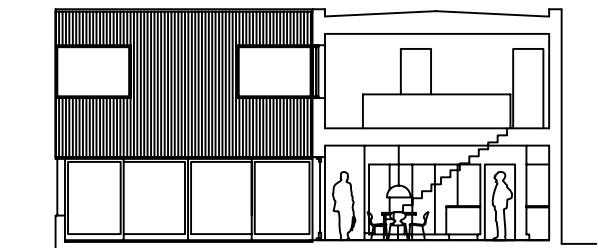
bottenplan



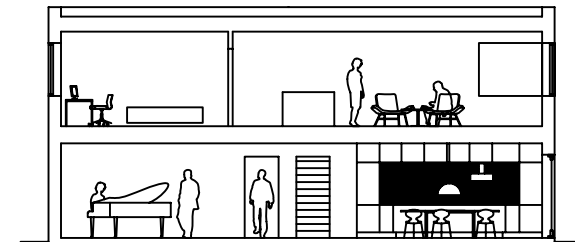
överplan



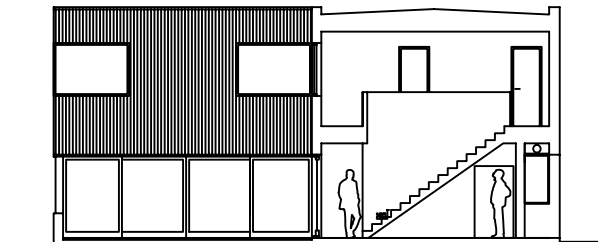
sektion A-A



sektion C-C



sektion B-B



sektion D-D

+6,1
+3,0
+0,0

L_c L_D

0 5m

ARKITEKTHUS

Tham & Videgård Hansson

HUS: AH#040
TYP: 2pl
BYA: 131 kvm
BOA: 228A kvm

SKALA: 1:200 A3
DATUM: 2009

Med reservation för eventuella ändringar