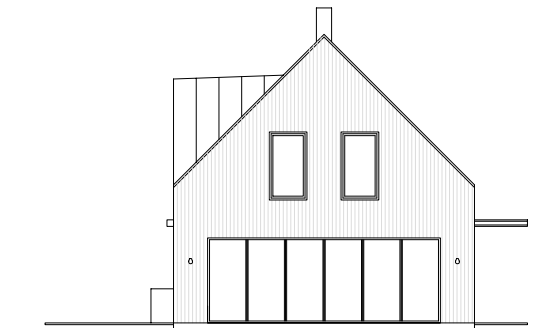


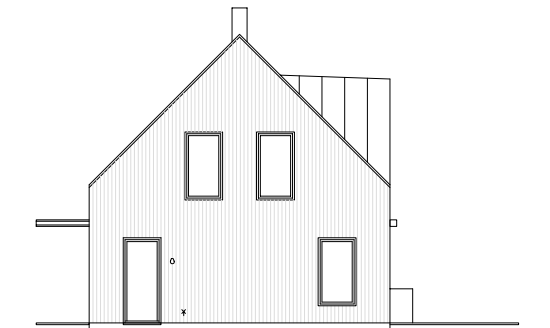
fasad A



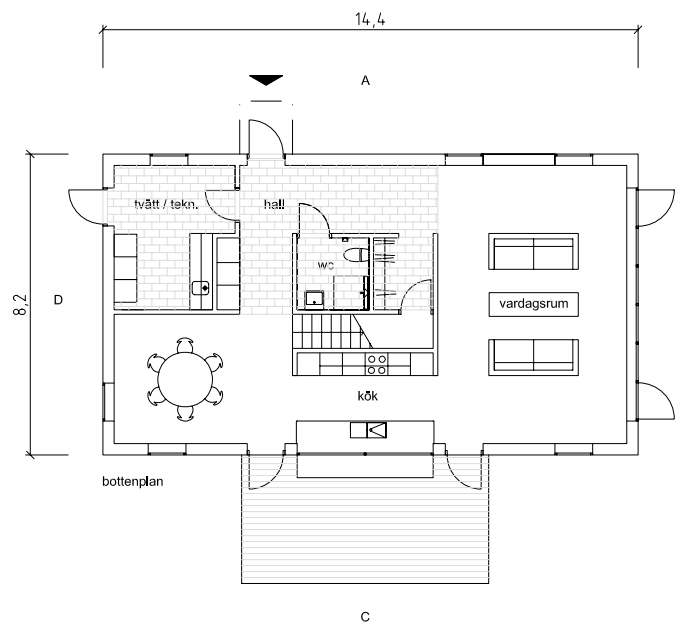
fasad B



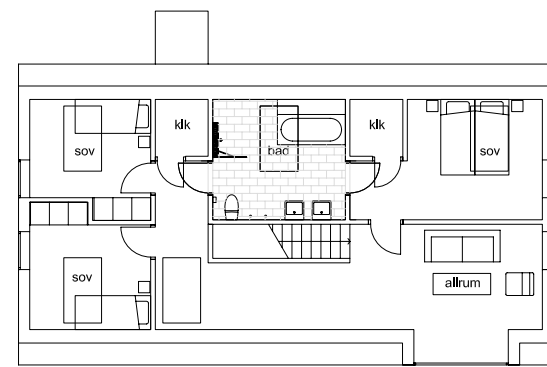
fasad C



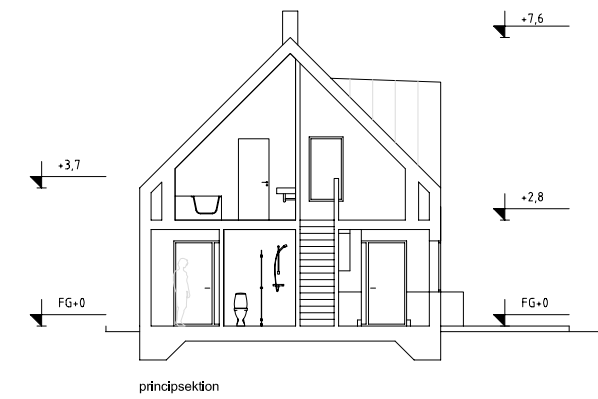
fasad D



bottenplan



övreplan



principsektion



ARKITEKTHUS

Thomas Sandell

HUS: AH#021

TYP: 1,5 pl

BYA: 118 kvm

BOA: 184 kvm

SKALA: 1:200 A3

DATUM: 2009

Med reservation för eventuella ändringar